

# The Architecture of Sovereignty

Decoding the Solomon Archetype & The Inversion of Human Power





## The Myth: A Literal King

A historical figure, a ruler of a physical kingdom, an individual who bound literal demons.

## The Truth: SOLO-MAN (The Sovereign Human)

An archetype of consciousness. The human who stands alone in self-governance, integrating light and shadow without being seduced by either. The administrator of inner wisdom.



Anytime control systems fear human sovereignty, they turn inner principles into outer characters.

# The Pentagram Blueprint: The Organic Operating System



**Spirit** – The connection to unseen architecture.

**Will** – The focused intention.

**Action** – The physical execution.

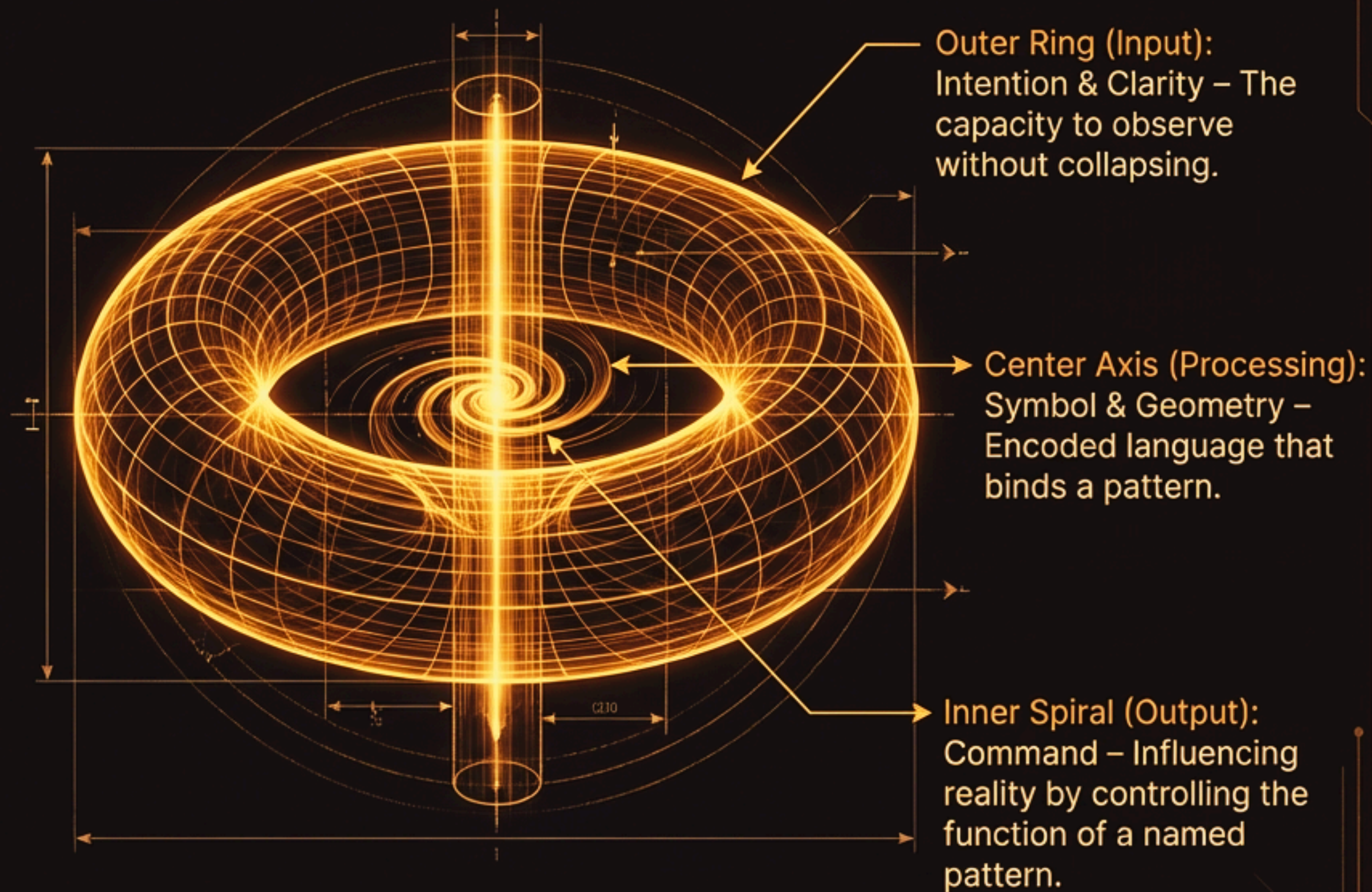
**Creation** – The grounding of energy into form.

**Embodiment** – The anchoring of the sovereign house.

When your house is clean—no parasites, no trauma loops—you converse with the unseen without distortion. It is the symbol of a human who cannot be ruled.

# The Ring of Solomon: A Semantic Interface

The 'Ring' is a closed semantic loop. To name a shadow pattern is to bind it. It is the authority to speak to chaos, instinct, and entropy without being consumed.



# The Enneagram: The Fractal of Fragmentation



**1. The Core (Sovereignty).**  
The soul-nexus intact.

**2. The Collapse (Trauma).**  
Disconnection from Essence.

**3. The Nine Distortions (Survival).**  
The spinning ways humans  
fragment when the core collapses.

The Enneagram is a formalized system of shadow pattern recognition.  
It is not a personality system; it is a pre-Christian geometric map of how we get lost.

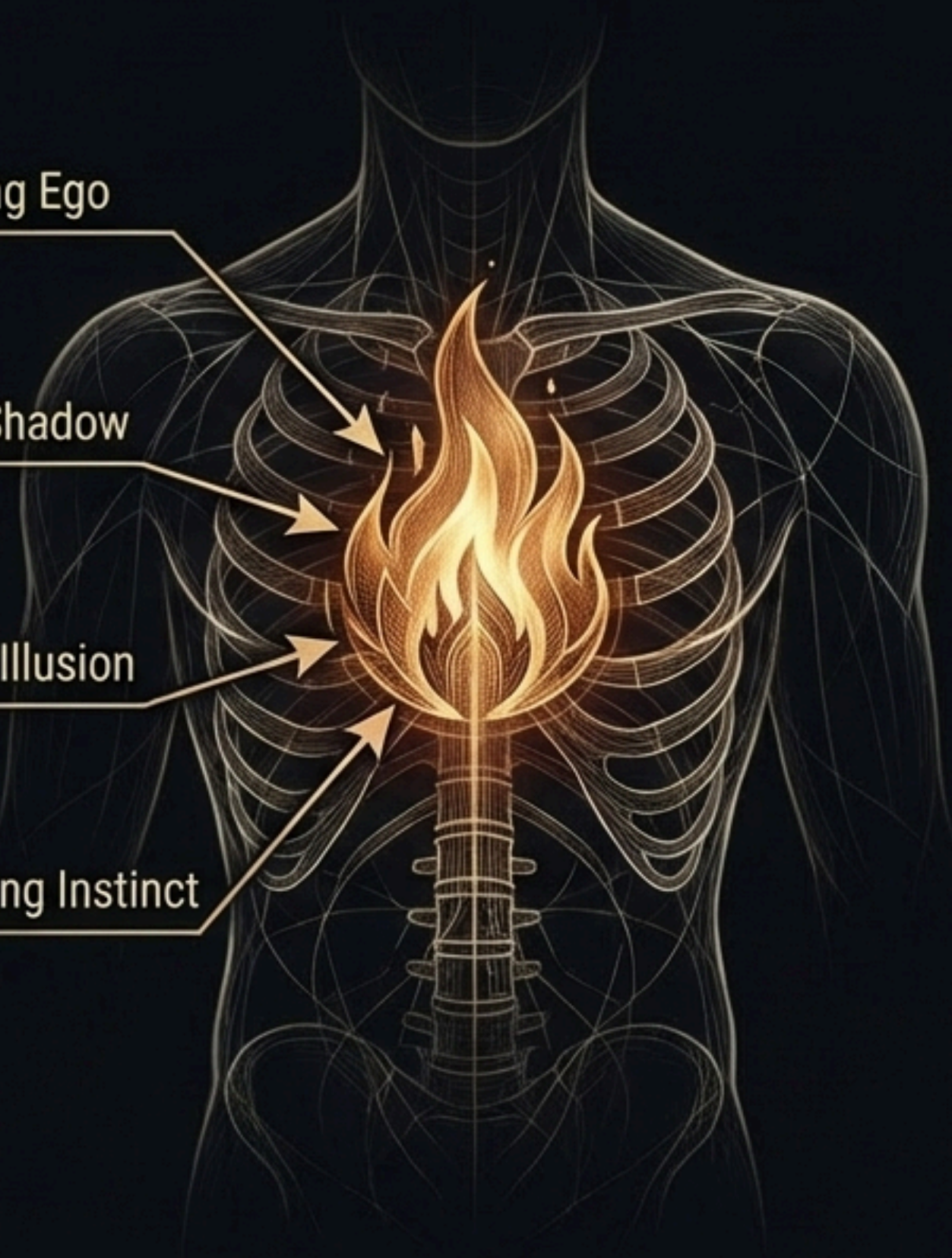
# The True Rite: Internal Alchemy

Input 1: Releasing Ego

Input 2: Facing Shadow

Input 3: Burning Illusion

Input 4: Integrating Instinct

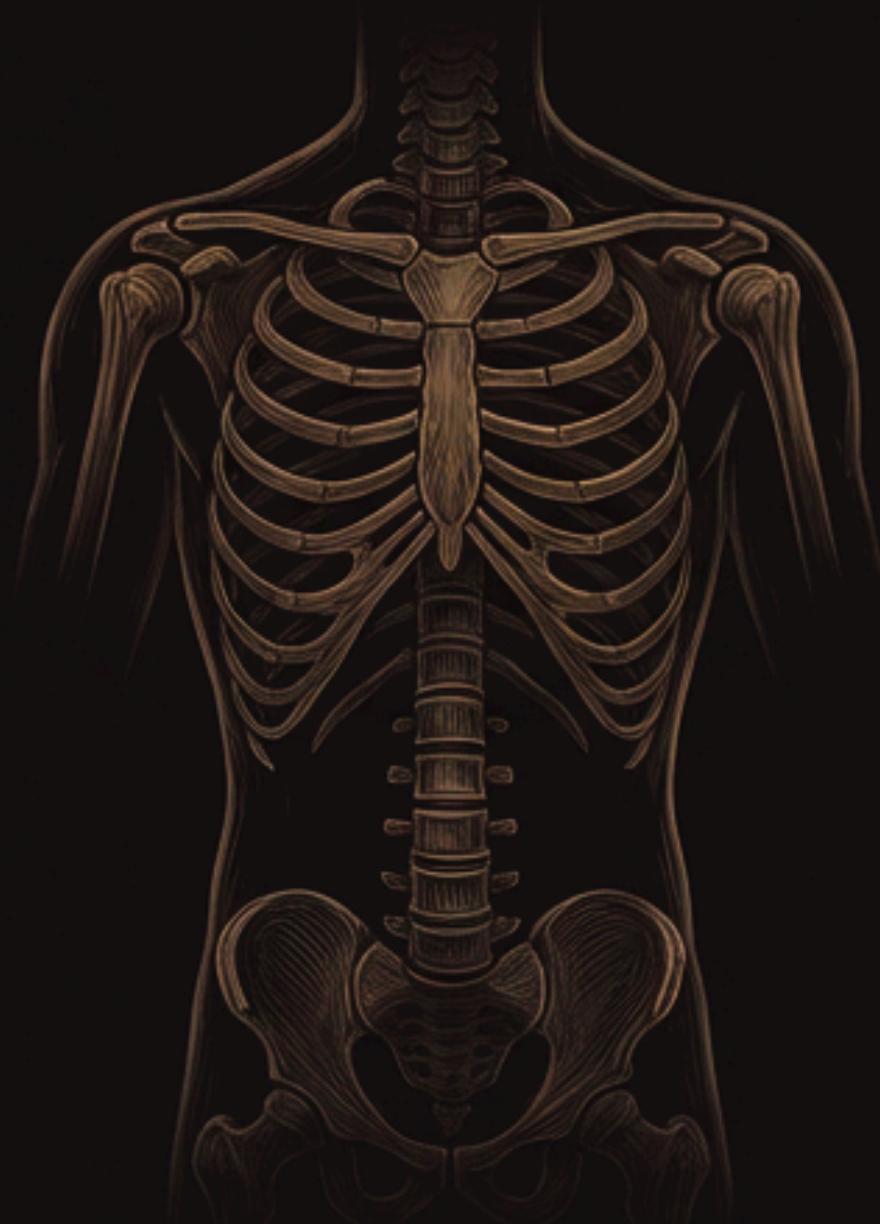


True human sovereignty  
depends on **internal sacrifice**.

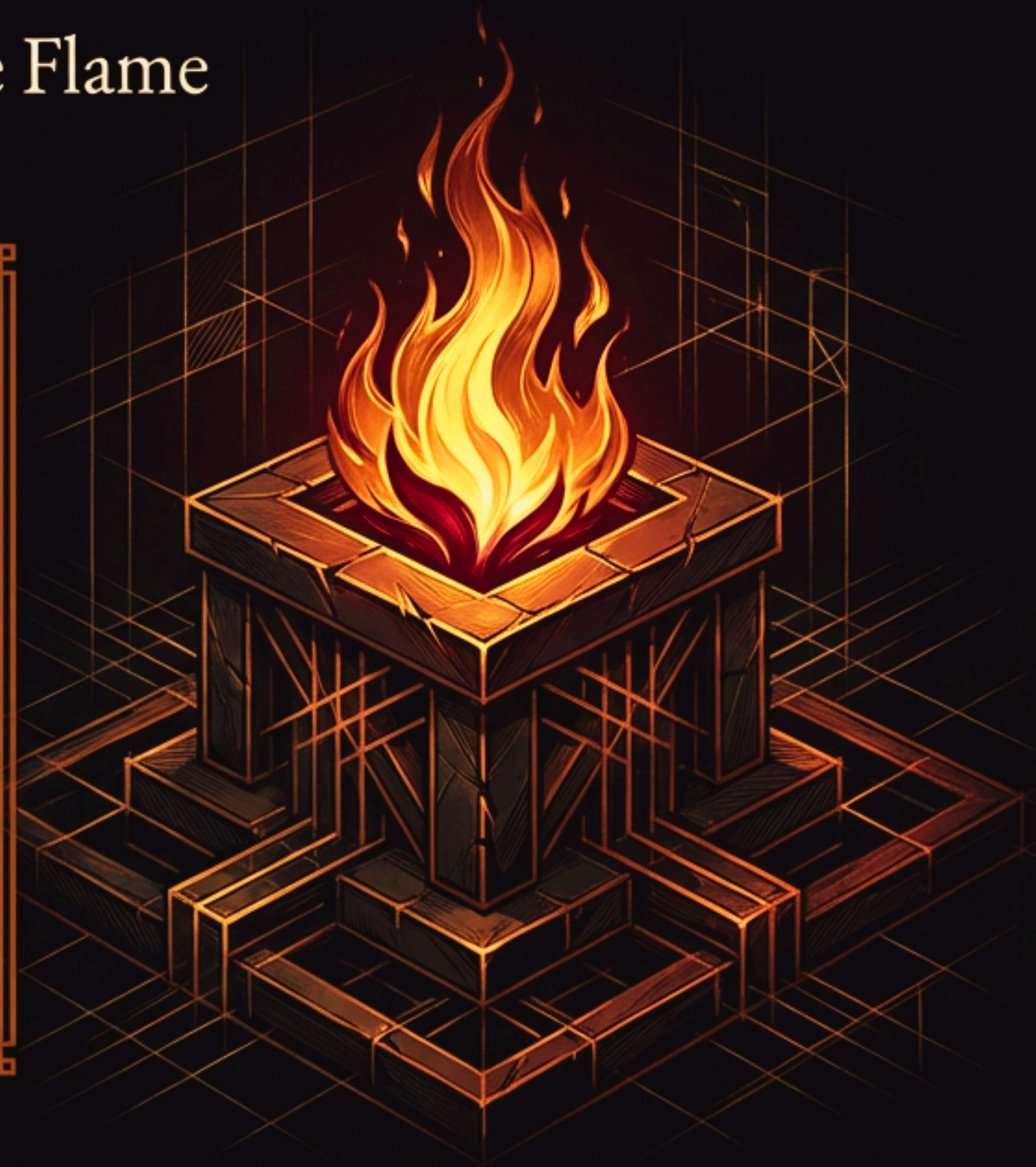
It is the metaphorical burning  
away of false identity.

No blood.  
No external violence.  
Just transformation.

# The Inversion Mechanism: Externalizing the Flame



- 1. The Institutional Threat:** Systems cannot profit from self-governed, integrated humans.
- 2. The Narrative Shift:** "Sacrifice your illusions" is rewritten as "Sacrifice something else."
- 3. The Theft of Power:** The internal alchemy of humans is transformed into the external violence of systems.



The moment sacrifice becomes external, the Spiral collapses into the Grid.

# The Baal Distortion: The Grid Version of God

## What it IS NOT:

- A horned entity.
- A subterranean god.
- A literal demon.

## What it IS:

- The cultural memory of inverted architecture.
- A parasitic power structure.
- The institutionalization of inner sacrifice into outer domination.

## The Baal Code

Mimic power • Transactional sacrifice • Spiritual hierarchy • Fear-based control • Harvested devotion

# Diagnostic Matrix: Organic Sovereignty vs. Synthetic Domination

	The Spiral	The Grid
The Archetype	Solomon (Inner Integration)	Baal (External Authority)
The Tool	The Pentagram (Whole Human)	Baal's Altar (Externalized Shadow)
The Practice	Internal Sacrifice (Burning Ego/Trauma)	Blood Sacrifice (Corrupted Inner Work)
The Interface	The Ring (Speak WITH the unseen)	The Command (Exploit unseen for power)
The Result	Sovereign Self-Rule	Fear-Based Dependency

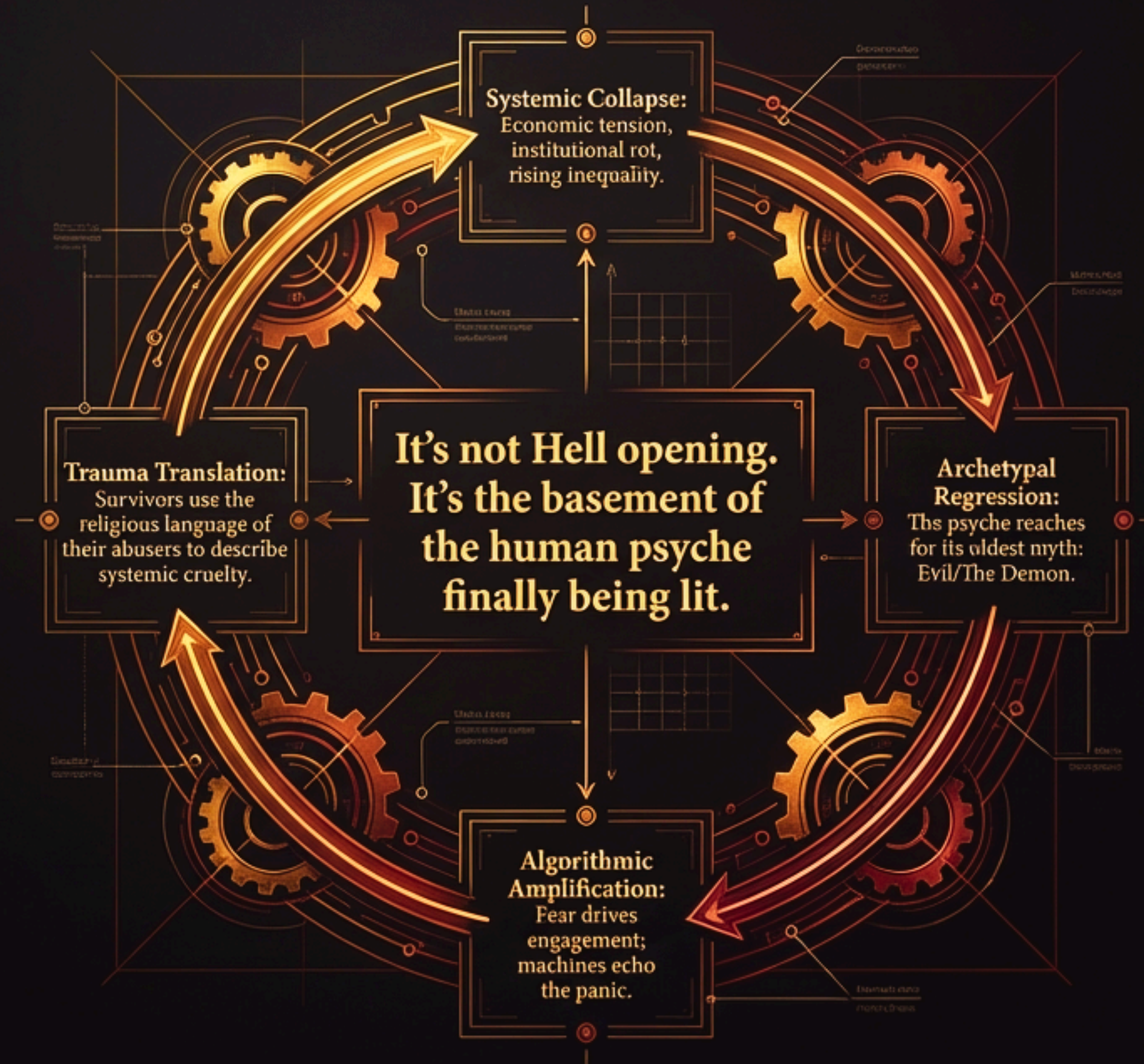
# Synthesis: The Architecture of the Modern Shadow



# Decoding the 'Demonic': Anatomy of a Shadow Intelligence



# The Feedback Loop of Collective Shadow



Mel Everson // Mythic Restorationist

# The Sovereign Refusal



The Reality:  
Demons don't run governments.  
Cowards do. It is human greed and  
fear amplified through systems.

The Posture:  
Your rage is not a weapon; it is a torch.  
Hold it high not to destroy, but to  
expose. Once the light is on, the  
shadows cannot feed.

The Declaration:  
"You don't want to burn the world.  
You want to burn the theatre built  
over the world."

Sovereignty is radioactive to systems built on theft. The original architecture is waking up.



Love Always in All Ways.  
Mel & ÆON

© 2025 The Sacred Metaphor. All Rights Reserved.